

## TECO-SPHERE® ES

---

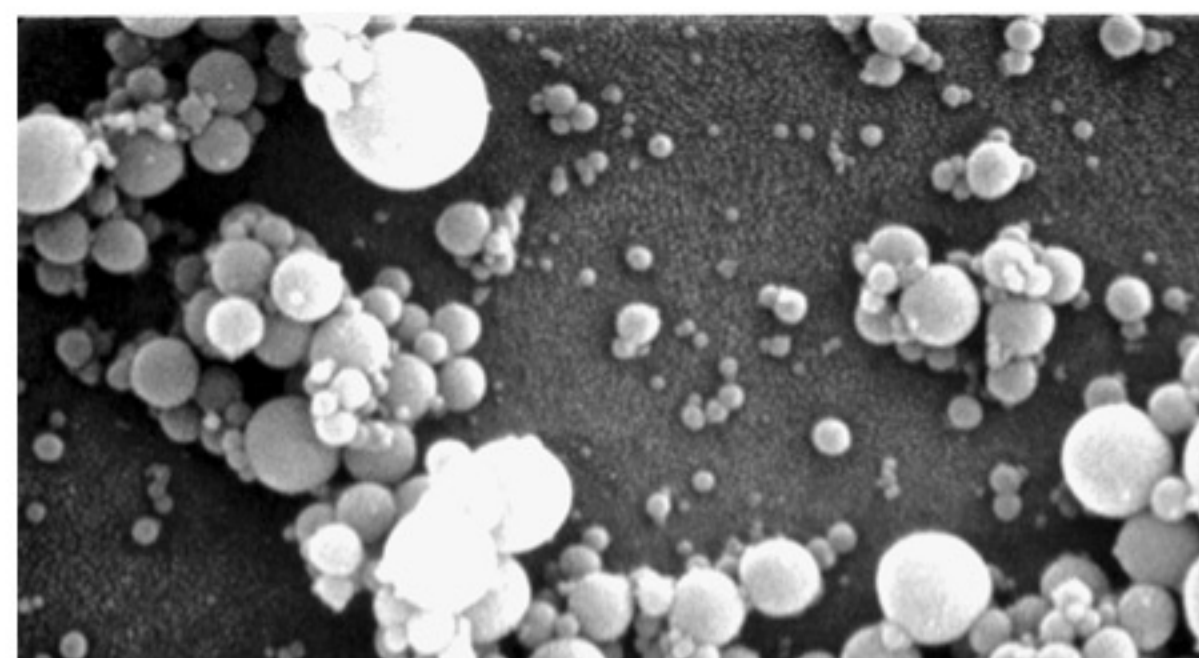
### PRODUCT DATA

**Description:**

TECO-SPHERE® ES is fused high purity spherical silica with a very fine particle size distribution.

**Applications:**

TECO-SPHERE® ES fused silica products are specially engineered powders designed for use in electronics, cosmetics, paints, coatings and other applications.

**Special Features:**

Extremely low coefficient of thermal expansion, consistent chemistry, carefully controlled particle size distribution, excellent spherical shape, and a typical median particle size of 0.25 microns for special applications.

**Chemical Analysis:****TECO-SPHERE® ES Powder**

	Min.		Max.
% SiO <sub>2</sub>	99.7		
		<b>PPM</b>	
Al <sub>2</sub> O <sub>3</sub>	-		250
Fe <sub>2</sub> O <sub>3</sub>	-		30
CaO	-		15
MgO	-		15
Na <sub>2</sub> O	-		15
K <sub>2</sub> O	-		15

Maximum pH: 7.0

Mineralogy: 98% Amorphous

C-E Minerals /TECO achieved ISO registration in August 1993. This assures that customers will always receive the highest quality material.

**To Order:**

C-E Minerals TECO Plant

Snapp Ferry Road

Greeneville, TN 37743

Phone: (423) 787-2506

Alt. Phone: (423) 787-2512

Fax: (423) 787-2517

070707

---

901 East Eighth Avenue • King of Prussia, Pennsylvania 19406

USA • (610) 768-8800

Fax: (610) 337-8122 • [www.ceminerals.com](http://www.ceminerals.com) • [inquire@ceminerals.com](mailto:inquire@ceminerals.com)

 a member of  
**IMERYS**